

glass sheet polarizer	
colorPol[®] IR 1300 BC5 003029	
linear VIS-NIR-polarizer	Date: 13.10.2010

Wavelength range with **contrast > 100 000 : 1**
 (Contrast = ratio of parallel and perpendicular transmittance)
 Transmittance (uncoated)

850 to 1600 nm
 > 82 % up to 86 %

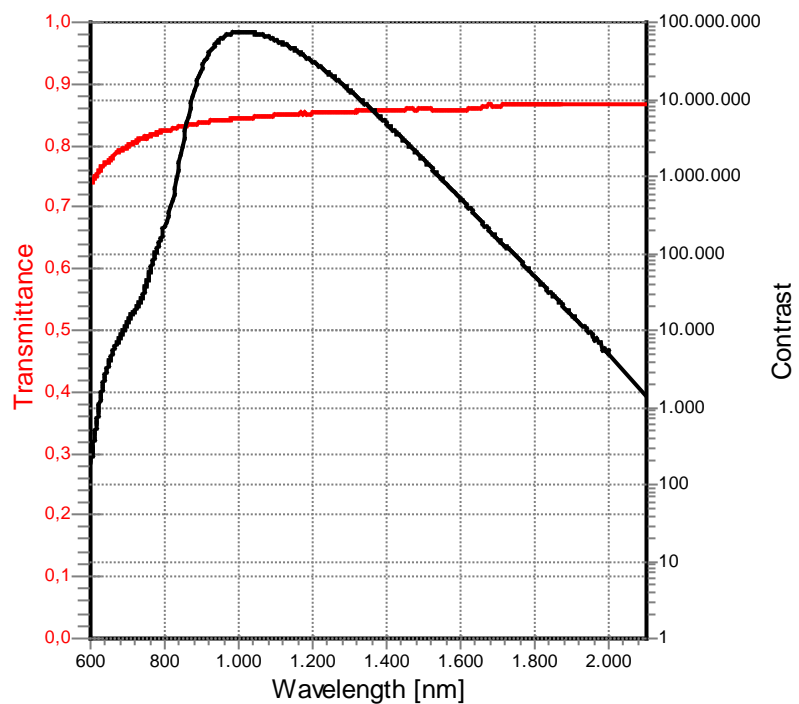
Wavelength range with **contrast > 10 000 : 1**
 Transmittance (uncoated)

750 to 1800 nm
 > 80 % up to 87 %

Wavelength range with **contrast > 1 000 : 1**
 Transmittance (uncoated)

650 to 2000 nm
 > 76 % up to 87 %

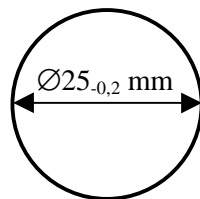
Spectral response



Filter thickness

$220 \pm 50 \mu\text{m}$

Filter size



Clear aperture

90 % of surface dimension

Acceptance angle

$\pm 20^\circ$

Operating temperature

-50 .. +400 °C